



# PES to PES Dialogue

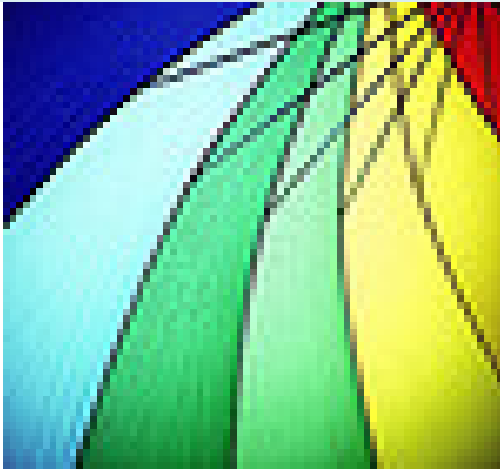
## European competences profile for PES and EURES advisers

ELGPN Plenary, Athens, 19-20 February 2014

Dr. Susanne Kraatz

European Commission - DG Employment, Social Affairs and Inclusion

## *PES to PES Dialogue – contribution to LLG policy field employment*



### **Quality guidance for jobseekers (and employers) – since the beginning 2011**

#### **Gaps identified:**

Diversity of recruitment and training requirements

#### **Implications - risks:**

Support does not correspond to the needs,  
Frustrated clients,  
Waste of resources for ALMP measures,  
Longer unemployment spells.

## *PES to PES Dialogue: Analytical Paper*

### European competences profile for PES and EURES advisers

- **Building upon series of activities within P2P**  
(-> Employment Guidelines 2020, HoPES - PES 2020, ELGPN)  
**Topics:** Guidance for Jobseekers, Profiling, Individual Action Planning, Survey - Job tasks and training concepts, Professionalism of employment counsellors
- **Taking up findings from other European projects**  
**Sources:** Cedefop, NICE - Network for Innovation in CG/counselling, Leonardo da Vinci projects, EURES training

## *Analytical Paper – Content, Procedure*

- **Content: Fields of competences include (draft)**
  1. **Cross-cutting (foundation) competences**  
e.g. ethical practice, client orientation, commitment service
  2. **Working with clients: Client interaction competences**  
e.g. interviewing and counselling  
placement / recruitment
  3. **Systems and networks: Supporting competences**  
e.g. service (country) specific competences / knowledge  
EURES specific competences
- **Procedure: to be endorsed by PES network, to be connected with ELGPN work (ready by June 2014)**
  - > European set of core competences
  - > National training approaches



GOOD BYE

AND

GOOD CONTINUATION!



**PES to PES Dialogue – and Newsletter you might wish to subscribe to:**  
<http://ec.europa.eu/social/main.jsp?catId=964&intPagelId=1254&langId=en>

Susanne Kraatz ([Susanne.KRAATZ@ec.europa.eu](mailto:Susanne.KRAATZ@ec.europa.eu))