



euro | guidance



Erasmus+

The Euroguidance Network

- 20+ years of supporting guidance practice and mobility in Europe

The International Dimension in Guidance

ELGPN meeting, 3-5 March 2015 in Riga



Erasmus+

Euroguidance in brief

- Established in 1992
- 68 National Centers in 34 countries
- Mostly hosted under Ministries of Education or Employment
- Financing:
50% Erasmus+ (KA 3) and 50% national contribution
- News 2015:
Move to DG Employment, Social Affairs and Inclusion

Austria	Liechtenstein
Belgium	Lithuania
Bulgaria	Luxembourg
Czech Rep.	Malta
Cyprus	Netherlands
Croatia	Norway
Denmark	Poland
Estonia	Portugal
Finland	Romania
France	Serbia
Germany	Slovak Rep.
Greece	Slovenia
Hungary	Spain
Iceland	Sweden
Ireland	Switzerland
Italy	Turkey
Latvia	United Kingdom

The International Dimension in Guidance

European dimension → International dimension

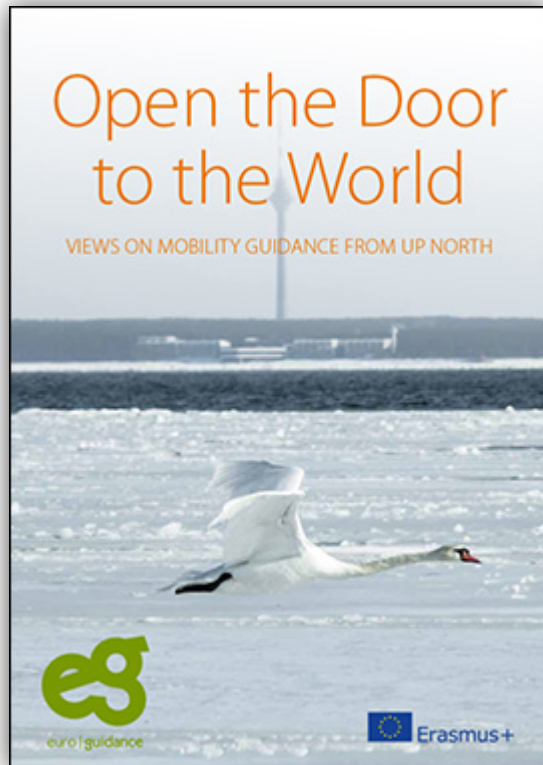
1. Enhancing the knowledge and skills of guidance practitioners so they are better able to promote mobility and support positive outcomes of individual mobility experiences
2. Promoting mutual awareness and cooperation between guidance services in different countries
3. Supporting European policy initiatives in the field of lifelong guidance

1.

Enhancing the knowledge and skills of guidance practitioners so they are better able to promote mobility and support positive outcomes of individual mobility experiences;

- Motivating and training guidance practitioners to include mobility in their work – inspiration, knowledge
- Supporting guidance practitioners in their work before, during and after a mobility period – concrete methods, tools

Publications



The publication brings together research articles, personal interviews and good examples relating to international mobility. There is also a checklist to recognise acquired skills from abroad and useful links.

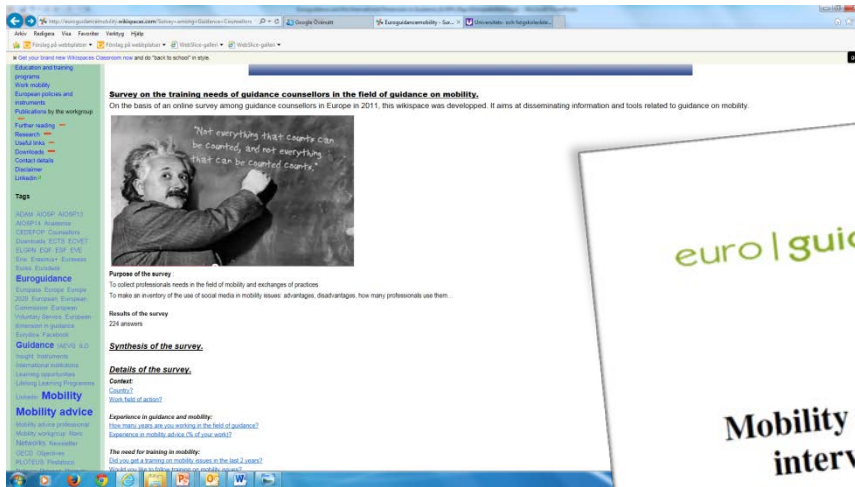
Everything is collected together as extended learning and inspiration under four themes:

- hidden competences
- mobility counselling
- disadvantaged groups
- open-mindedness

<http://euroguidance.eu> – look under "publications"

Euroguidance Mobility wiki

<http://euroguidancemobility.wikispaces.com>



- Created in response to an online survey of guidance counsellors in Europe in 2011



Content

- Process of mobility
- Education and training programmes
- Work mobility
- European policies and instruments
- Publications by the Mobility work group
- Further reading
- Research
- Useful links, downloads, contacts

Mobility toolboxes

Examples:

Estonia: rajaleidja.ee/varalaegas

Sweden: www.euroguidance.se



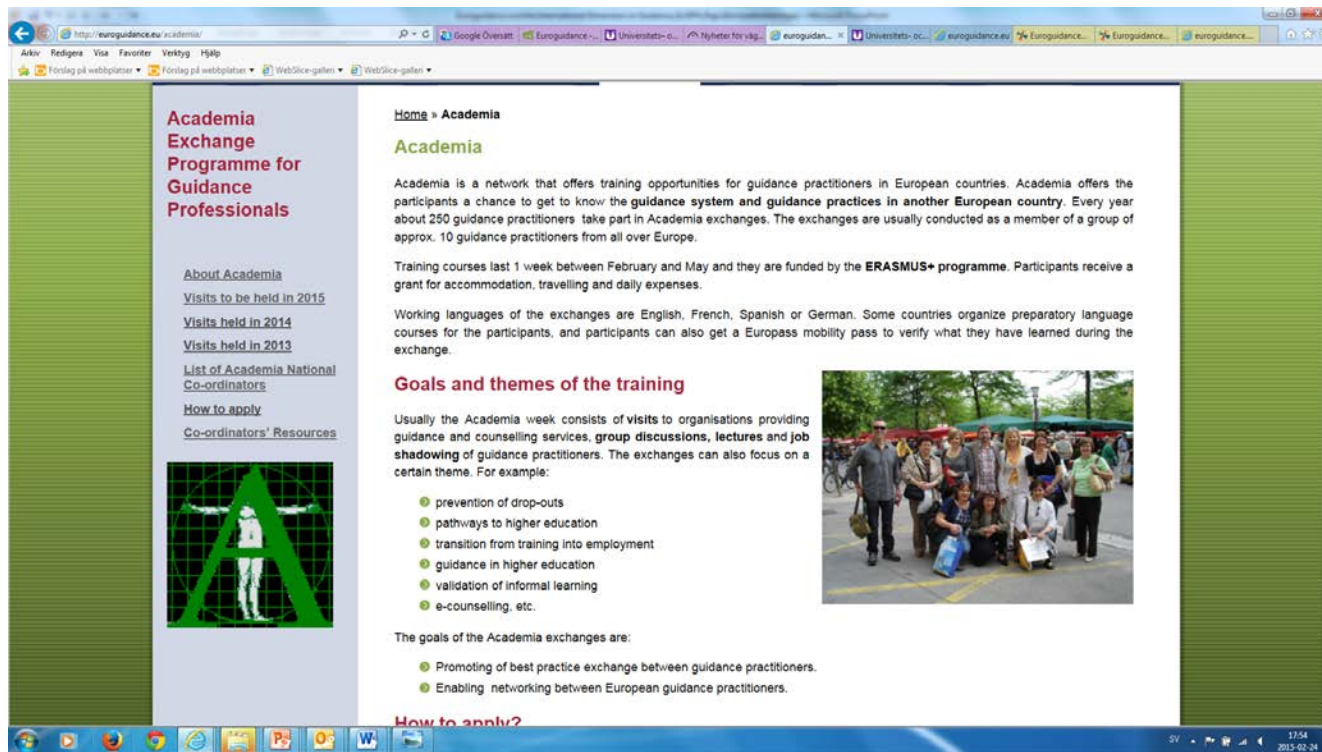
To achieve as good potential for learning as possible, it is important to assure the quality of the stay abroad in different ways - before, during and after.

2.

Promoting mutual awareness and cooperation between guidance services in different countries

- Information adjusted to the target group on international possibilities for cooperation and exchange within the European programmes
- Organisation of different opportunities for exchange and cooperation


Academia Exchange Programme for Guidance Professionals



The screenshot shows a web browser displaying the website for the Academia Exchange Programme. The browser's address bar shows the URL <http://euroguidance.eu/academia/>. The page content includes a navigation menu on the left, a main content area with text and a list of bullet points, and a photograph of a group of people.

Academia Exchange Programme for Guidance Professionals

[About Academia](#)
[Visits to be held in 2015](#)
[Visits held in 2014](#)
[Visits held in 2013](#)
[List of Academia National Co-ordinators](#)
[How to apply](#)
[Co-ordinators' Resources](#)



Home » Academia

Academia

Academia is a network that offers training opportunities for guidance practitioners in European countries. Academia offers the participants a chance to get to know the **guidance system and guidance practices in another European country**. Every year about 250 guidance practitioners take part in Academia exchanges. The exchanges are usually conducted as a member of a group of approx. 10 guidance practitioners from all over Europe.

Training courses last 1 week between February and May and they are funded by the **ERASMUS+ programme**. Participants receive a grant for accommodation, travelling and daily expenses.

Working languages of the exchanges are English, French, Spanish or German. Some countries organize preparatory language courses for the participants, and participants can also get a Europass mobility pass to verify what they have learned during the exchange.

Goals and themes of the training


Usually the Academia week consists of **visits to organisations providing guidance and counselling services, group discussions, lectures and job shadowing** of guidance practitioners. The exchanges can also focus on a certain theme. For example:

- prevention of drop-outs
- pathways to higher education
- transition from training into employment
- guidance in higher education
- validation of informal learning
- e-counselling, etc.

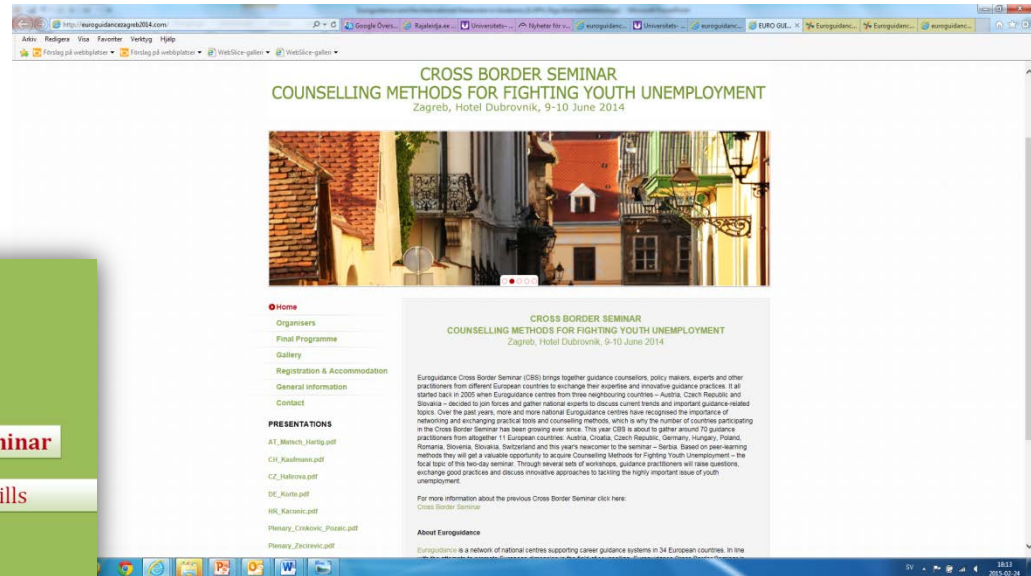
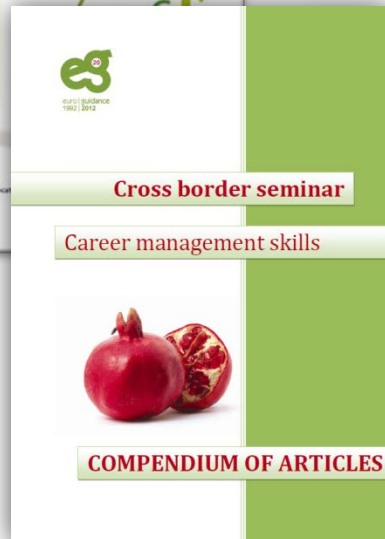
The goals of the Academia exchanges are:

- Promoting of best practice exchange between guidance practitioners.
- Enabling networking between European guidance practitioners.

[How to apply?](#)



Cross-border seminars



09-10 June 2015 in Retz, Austria
“Guidance Crossing Borders”.

Study visits and trainings

Country	Planned date 2014	Topic
Romanian(Bucharest)	19-23 May	Evidence base in school counselling
Sweden (Stockholm)	5-9 May	Training/job shadowing for Estonian and Swedish guidance professionals
Croatia (Zagreb)	9-10 June	Counselling Methods for Fighting Youth Unemployment
CYPRUS, Larnaka-Nicosia-Limassol	June 16 – 18	Developing skills for lifelong Career Management – open training for guidance practitioners in Cyprus delivered by Euroguidance Greece
France (Paris)	16-20 June	LL guidance in France: guidance institutions and tools used by the the guidance professionals (in French)
Switzerland (Univ. of Fribourg)	23 June	Networking Conference for educational and careers guidance practioners on Lifelong Guidance
Spain (Madrid region)	24 – 26 June	Guidance in Spain (working language: French & Spanish)
Slovenia (Ljubljana)	30.9-1.10	Guidance in Slovenia
Romania(Bucharest)	nov-14	Euroguidance International conference

3.

Supporting European policy initiatives in the field of lifelong guidance

- Informing guidance practitioners of current discussions
- Disseminating policy-papers and publications (in some cases translating them first)
- Promoting the international dimension in guidance on policy level in Europe and nationally

The Euroguidance Network's Newsletter



The image shows the cover of the Euroguidance Insight newsletter for November 2014. At the top left is the 'euro|guidance' logo and text. To its right is a green banner with the title 'Euroguidance Insight'. Below the logo is the text 'European Network to Support Guidance and Counselling'. A green bar below the title contains the date 'November 2014'. On the left is a photograph of three young men sitting at a table, looking at a document. On the right is a green box titled 'In this issue:' containing a list of articles.

euro|guidance
European Network to Support
Guidance and Counselling

Euroguidance Insight

November 2014

In this issue:

- Swedish reports about dropping out and how to prevent it
- Guidance counselling seminar for Croatian primary school counsellors and teachers
- Imbalanced mobility among students in Europe
- Studying abroad improves job opportunities - New Research from the European Commission on Erasmus
- Professionalising Career Education and Guidance in various forms and sizes
- Future career guidance skills under the microscope in Canterbury
- Lunch in the darkness - Euroguidance study visit in Slovenia
- What is an e-portfolio? Two Polish experts give their opinion.

Swedish reports about dropping out and how to prevent it

The Swedish Theme Group Youth gathers and disseminates knowledge and experiences from labour market projects directed at young people, using funds from the European Social Fund. It is a cooperation project between several Swedish authorities and the Swedish Association of Local Authorities and Regions.

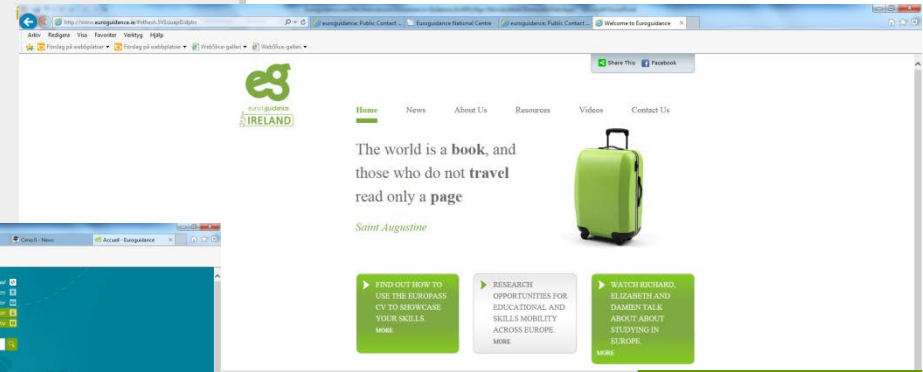
Published twice a year
– spring and autumn

Available on
<http://euroguidance.eu>

National publicity, websites, newsletters etc



Euroguidance Netherlands



Euroguidance Ireland



Euroguidance France

Common feedback and communication papers from the Euroguidance Network



Euroguidance Network proposals on the NICE European Competence Standards NOVEMBER 2014

INTERNATIONAL DIMENSION TO BE INTEGRATED IN EUROPEAN COMPETENCE STANDARDS

The Euroguidance Network appreciates that the European Competence Standards proposed by NICE contribute to strengthening career guidance and counselling as a recognized profession in Europe and provide a sound basis for measurable competences defining the core professional roles and functions of career guidance and counselling. Quality assurance is a key factor within the guidance provision and a possibility for citizens to assemble their tailor-made learning pathways into work life. The most important element of quality in guidance is the competent and skilled guidance practitioner who can support each individual in this path.

The European Union's strategic goal to increase mobility between countries should be reflected in the



The role of the Euroguidance Network towards the European Area of Skills and Qualifications¹ Position Paper on the EU public consultation April 15th 2014

THE EUROGUIDANCE NETWORK: 20+ YEARS OF SUPPORTING GUIDANCE PRACTICE AND MOBILITY IN EUROPE

Since its establishment in 1992, the Euroguidance network has gradually developed into a powerful platform for the enhancement of career guidance in Europe. The first Euroguidance centres were established in 1992 by the European Commission within the Petra Programme. Today, Euroguidance has already celebrated its 20th anniversary in 2012, linking together the careers guidance systems in Europe in a network of 68 National Resource Centres for Guidance in 34 European countries, employing around 300 full time specialized advisors – experts. Euroguidance promotes mobility by helping guidance counsellors and individuals to better understand the opportunities available to them.



Thank you for your attention!

Euroguidance Working Groups, contacts:

Strategy & Quality WG: Fotini Vlachaki, fotinivlachaki@eoppep.gr
Nina Ahlroos, nina.ahlroos@uhr.se

Mobility WG: Grazianna Boscato, euroguidance@ac-strasbourg.fr
Jef Vanraepenbusch, jozef.vanraepenbusch@ond.vlaanderen.be

Promotion WG: Mick Carey, Mick.Carey@careerseurope.co.uk

Staff Development WG: Katerina Haskova, katerina.haskova@naep.cz
Peter Van Deursen, pdeursen@cinop.nl
Maria Christina Chopourian, mtchopourian@dl.mlsi.gov.cy



Erasmus+