

National Lifelong Guidance Policy Development

Teija Felt
Labour Market Counsellor
Ministry of Labour and the Economy

Ulla-Jill Karlsson,
Special Government Advisor
Ministry of Education and Culture

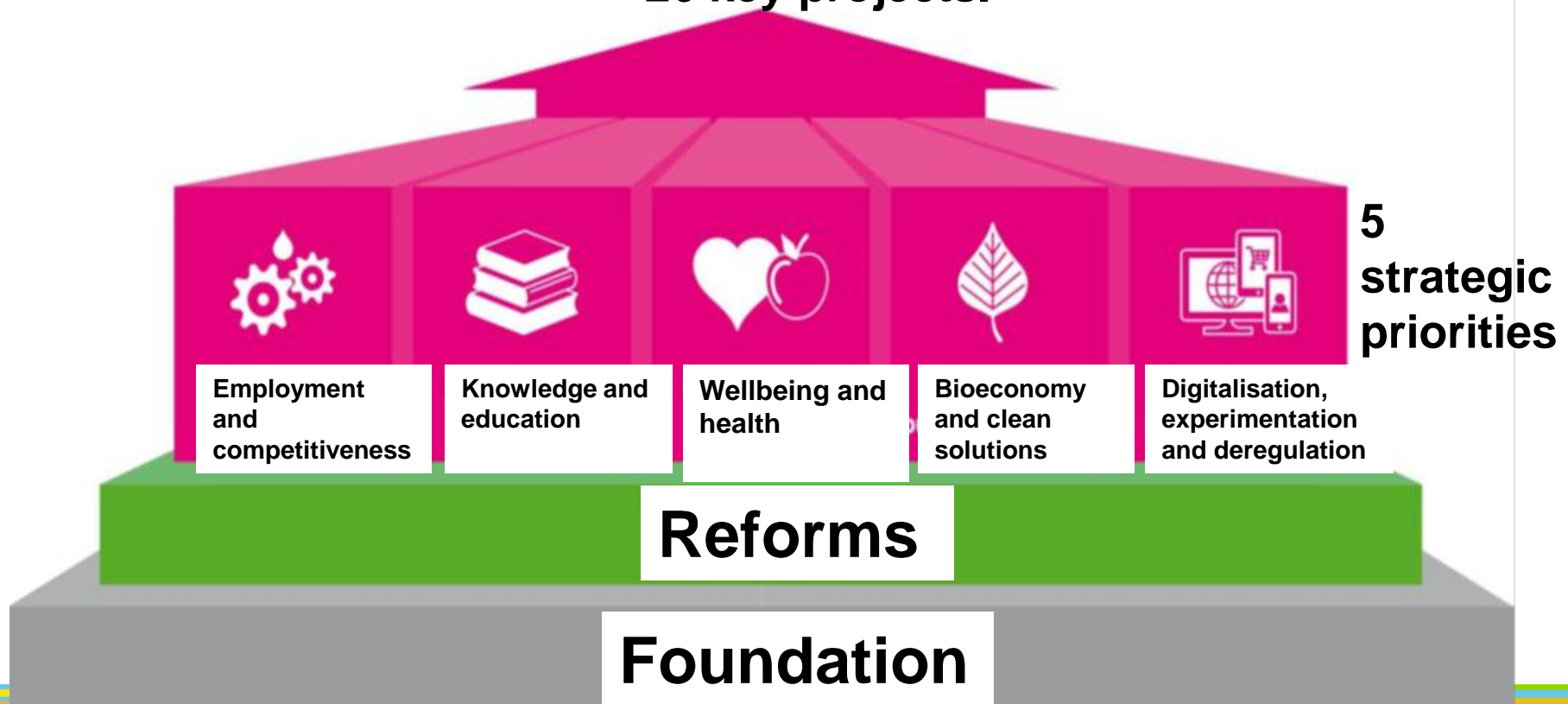


Ministry of
Education
and Culture



Finland's vision for the Future: Finland 2025 – built up together

The strategic objectives are materialised in the form of
26 key projects.



Read more: <http://valtioneuvosto.fi/en/sipila/government-programme>

Government programme...

Structural reforms

- Social welfare and health care,
- Regional administration reform, municipality of the future
- **Cutting local government costs**

National ESF programme to enhance the process

- Youth Guarantee
- Integration of Immigrants "At home in Finland"
- Social Rehabilitation



Ministry of
Education
and Culture



The National Strategical aims for the development of lifelong guidance

The functioning of lifelong guidance requires that:

1. Guidance services are equally accessible and they meet the individual needs
2. Individual career guidance abilities are strenghtend
3. Those who work in the field of guidance have the required knowledge
4. Development of a quality system for guidance
5. Guidance is organized in way that ensures a holistic approach



Ministry of
Education
and Culture



Guidance co-operation and coordination

- **National level: National Lifelong Guidance Working Group** (ministries, social security institution, municipalities, education providers, employment and the economy services, regional administration, social partners and voluntary/community organisations).

Regional level: regional Lifelong Guidance Working groups (regional administration, employment and economic services, educational institutes, municipalities, social partners and voluntary/community organisations)

TE-offices (=PES)

Educational institutions

Other services



Lifelong Guidance in Finland

Other service providers
(trade unions/community
associations..)

Educational Services

Comprehensive school (9 years)

Upper secondary education (3 years)

General upper
secondary school

Vocational
college

Higher education (3-5 years)
Polytechnics and Universities

Adult education institutions

Employment Services

TE-services.fi & Enterprise Finland
online service
Service introduction, information, guidance,
tasks, e-services

Self-Service

TE-ASPA

TE-Office

TYP Cross-
sectoral joint
service
promoting
employment

Multi-channel

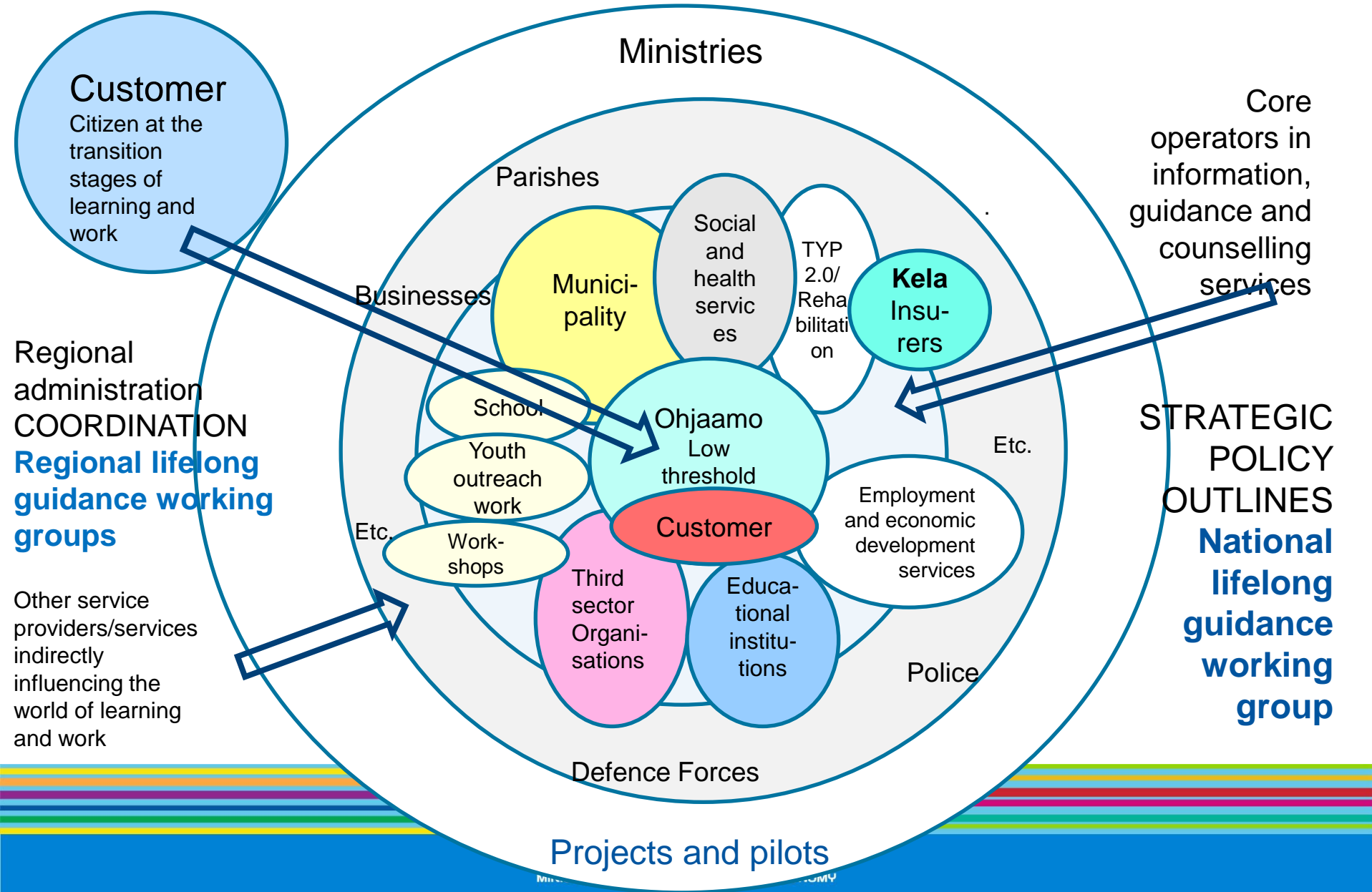
Internal cooperation and consultation

One-Stop
Guidance Center

Co-operation in networks



One stop guidance centres (Ohjaamo) - a new local service model



Regional co-operation and co-ordination of lifelong guidance

The responsibility of:

- The Centre for Economic Development, Transport and the Environment (ELY-centre)
- The Regional State Administrative Agencies (AVI) coordination of education in Swedish; as well as lifelong guidance

The co-ordination task is supported by the regional Lifelong Guidance Working groups



Ministry of
Education
and Culture



The task of the regional Lifelong Guidance Working groups

2016-2019:

1. Ensure the access to multi-channel knowledge, advisory and guidance services
2. Ensure a continuing development of competences of the guidance providers
3. Quality ensurance of the knowledge, advisory and guidance services
4. Promote the CMS skills of every citizen through a well funtining service provision

2015-2016:

- the establishment and development of low-threshold cross-sectoral guidance services and
- the use of ICT in guidance and the development of integrated online career services



Ministry of
Education
and Culture

